

CRL PANIC AND DEADBOLT HANDLE

Quote/Order Form (100 and 110 Series)

Fax Completed Form
to (800) 587-7501

Date: ____ / ____ / ____

Firm Name: _____ P.O. # (if Ordering): _____

Phone #: _____ City and State _____

Project Name: _____

Architect: Name, City and State: _____

Quantity: _____ Door Mark: _____

Panic Housing: PA100 Series PA110 Series Exterior Handle: A B C D E

Deadbolt Housing: DB100 Series DB110 Series F G H J J-S

Dummy Housing: DH100 Series DH110 Series K K-S L L-S M

M-S N P

X Y Z

(None)

Swing Pair(s): _____ Swing: 3&4 / Single(s): _____ Swing: _____

Keying: With Exterior Key Cylinder Keyed Alike

No Exterior Key Cylinder Other: _____

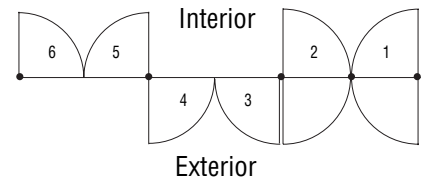
CRITICAL INFORMATION (PA/DB100 Series Only)

Jamb Condition: Sidelites Frame Width: _____

Wall (Pivot Distance Must be Increased to 3-1/2")

Header Size: _____ Recommended Width is 6"

Door Swing Diagram



Electric Strike: Yes Folger Adam 310-1 with 3/4" Straight Keeper (FA3101-24VDC)

(PA/DB100 Series Only) No Without Signal Switch-Furnished by CRL

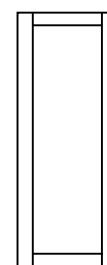
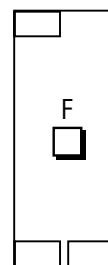
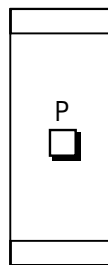
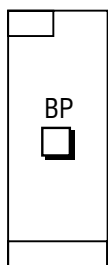
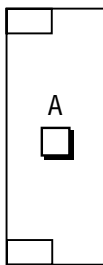
Sill Condition: Floor Mounted Ramp Strike

(PA110 Series Only) Threshold Ramp Strike (Minimum is 1/2" x 7")

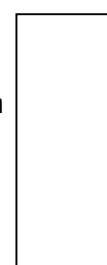
Rail Description: Clad Non-Clad Size or Number: _____

Door Type:

Check One



Stile
 Medium
 Wide



Metal or Wood
_____"
Thick

Glass Thickness: 1/2" (12 mm) 3/4" (19 mm)

Actual Door Size: _____ Horizontal Centers: _____ (CRL Will Calculate)

Crash Bar Height Above Bottom of Door: 42" Other Specify: _____

Finish: Stainless Steel: #4 Satin #8 Polished

Brass: #4 Satin #8 Polished

Custom Specify: _____

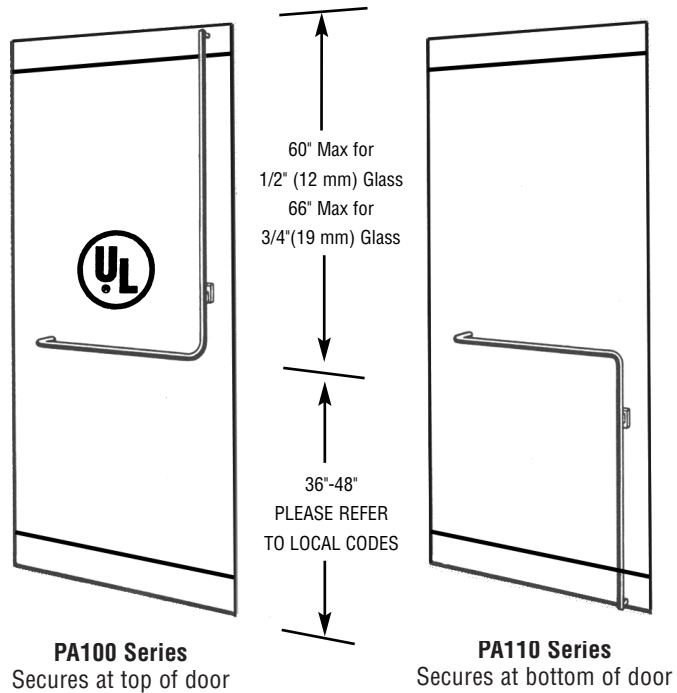
Please Contact CRL Technical Sales for specification details on ordering these new handles for All Glass Entrance Doors. Phone us at (800) 421-6144 U.S. , or (877) 421-6144 Canada, Extension 7700. You may also fax to (800) 587-7501, or e-mail techsales@crlaurence.com

CRL INTERIOR DOOR HANDLES

CRL Panic Handles

- For 1/2" (12 mm) or 3/4" (19 mm) Tempered Glass
- Can Be Used as Replacement for Older Panics
- Custom Sizes of Stock Finishes Ship Within Three to Five Business Days
- Optional Keyed Access
- Optional Electric Strike
- Optional Exterior Fixed Handles
- Available in Polished or Brushed Stainless Steel, Polished or Satin Brass, and Oil Rubbed Bronze

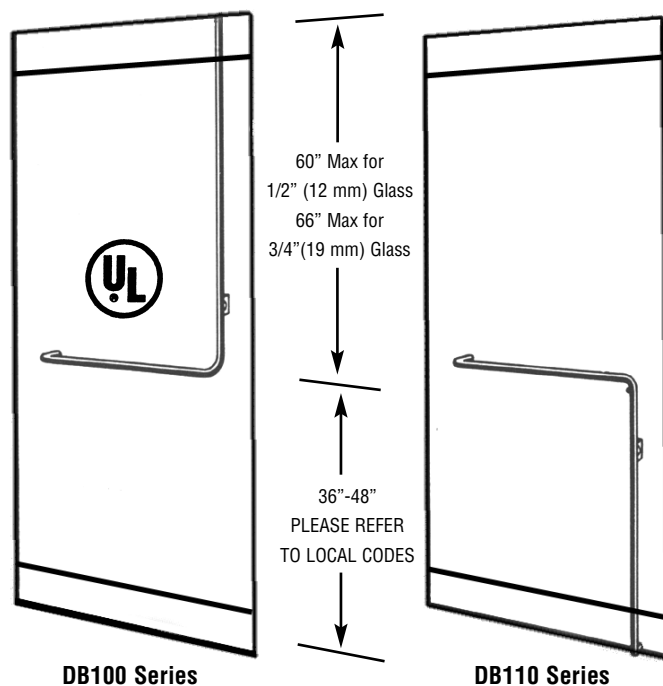
Operating Handles on Interior Side of Door



CRL Deadbolt Handles

- For 1/2" (12 mm) or 3/4" (19 mm) Tempered Glass
- Can Be Used as Replacement for Older Deadbolts
- Custom Sizes of Stock Finishes Ship Within Three to Five Business Days
- Optional Keyed Access
- Optional Electric Strike
- Optional Exterior Fixed Handles
- Available in Polished or Brushed Stainless Steel, Polished or Satin Brass, and Oil Rubbed Bronze

With Locking Mechanism on Interior Side of Door



Certification: ANSI/BHMA A156.16 Grade 1

Please Contact CRL Technical Sales for specification details on ordering these new handles for All Glass Entrance Doors. Phone us at (800) 421-6144 U.S. , or (877) 421-6144 Canada, Extension 7700. You may also fax to (800) 587-7501, or e-mail techsales@crlaurence.com

CRL EXTERIOR PUSH/PULL HANDLE COMBINATIONS FOR PANIC AND DEADBOLT HANDLES

Exterior Fixed Pull Handles



NOTE: Any Exterior Fixed Pull Handle on this page can be used in combination with any Panic Device or Deadbolt Handle shown on page 2

Please Contact CRL Technical Sales for specification details on ordering these new handles for All Glass Entrance Doors. Phone us at (800) 421-6144 U.S. , or (877) 421-6144 Canada, Extension 7700. You may also fax to (800) 587-7501, or e-mail techsales@crlaurence.com

CRL SUGGESTED GUIDELINES

CRL Recommends that Door Height be Limited to:

1/2" (12 mm) Glass:

Exterior Openings: 8'-0" (2.44 m)

Interior Openings: 8'-6" (2.59 m)

3/4" (19 mm) Glass:

Exterior Openings: 8'-6" (2.59 m)

Interior Opening: 9'-0" (2.74 m)

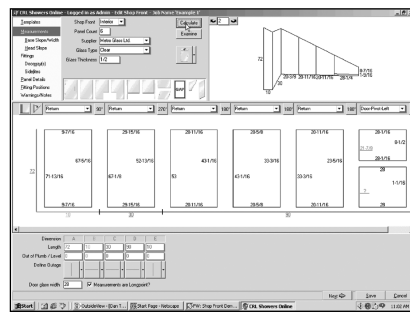
NOTE: If doors exceeding these recommendations are required, the designer should take into account the following factors:

- Volume of Daily Usage (Number of Anticipated Cycles)
- Deflection of Door Due to Wind and/or Stack Load Pressures
- Stability of Door Under Operation (How Much the Door Flexes When Pushed)

For assistance in design applications, please contact CRL Technical Sales

CRL STOREFRONTS ONLINE DESIGN AND GLASS SIZE PROGRAM

- An Innovative Web-Based Program that Generates Glass Sizes from Measurements You Take in the Field
- Access 24/7 at www.crlaurence.com
- Frameless Storefront Designs Have Never Been So Easy
- Simply Push the Print Icon Upon Completion of Data Entry to Generate Complete Glass Sizes
- Built-In Safety Features Ensure CRL Approves of Design and Specifications



**CALL FOR DETAILS!
Ask for Extension 7706**

Please Contact CRL Technical Sales for specification details on ordering these new handles for All Glass Entrance Doors. Phone us at (800) 421-6144 U.S. , or (877) 421-6144 Canada, Extension 7700. You may also fax to (800) 587-7501, or e-mail techsales@crlaurence.com